



# OMEC NORTH AMERICA INC

CAST IRON - GENERAL PURPOSE MOTORS

## PRODUCT FEATURES

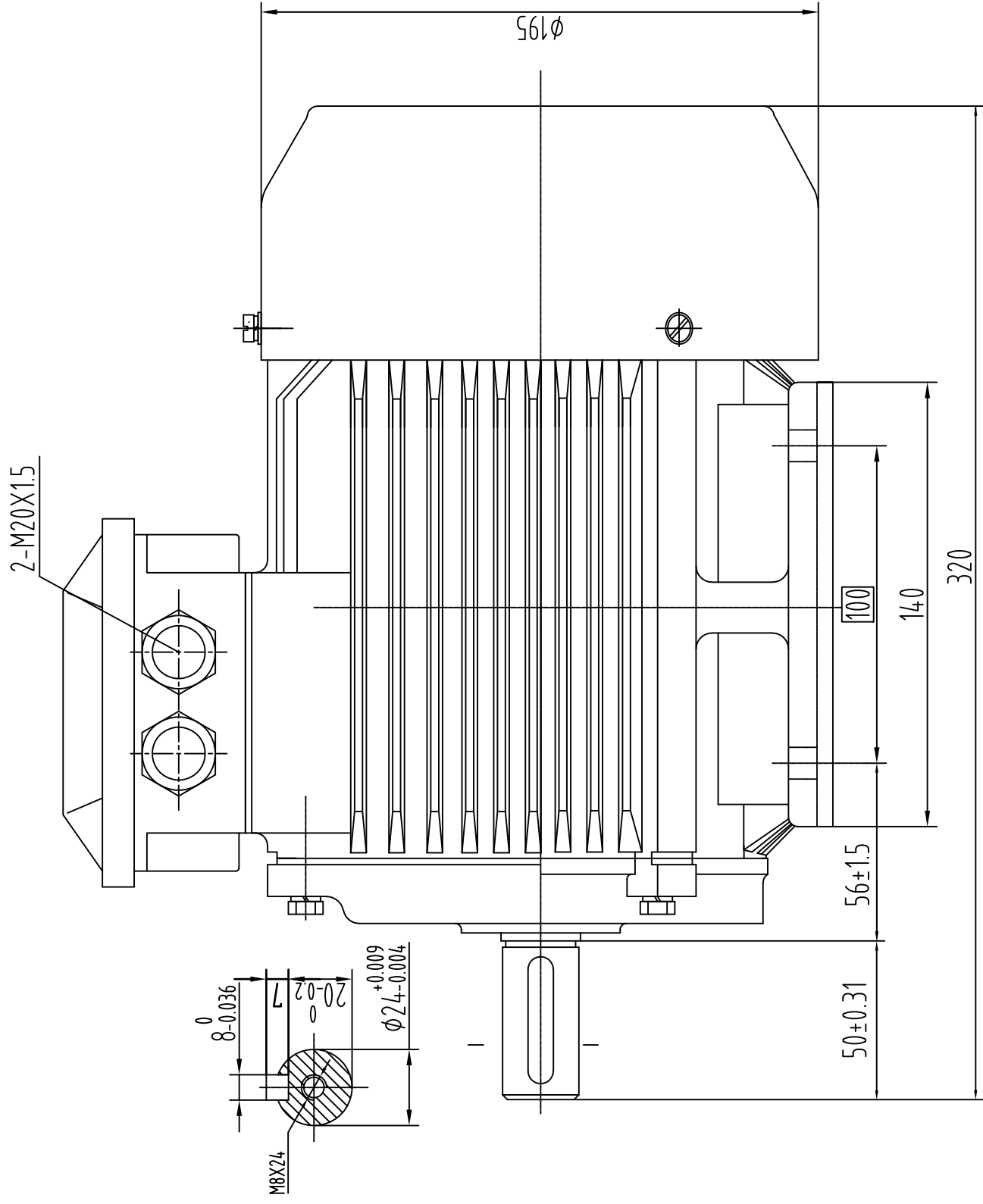
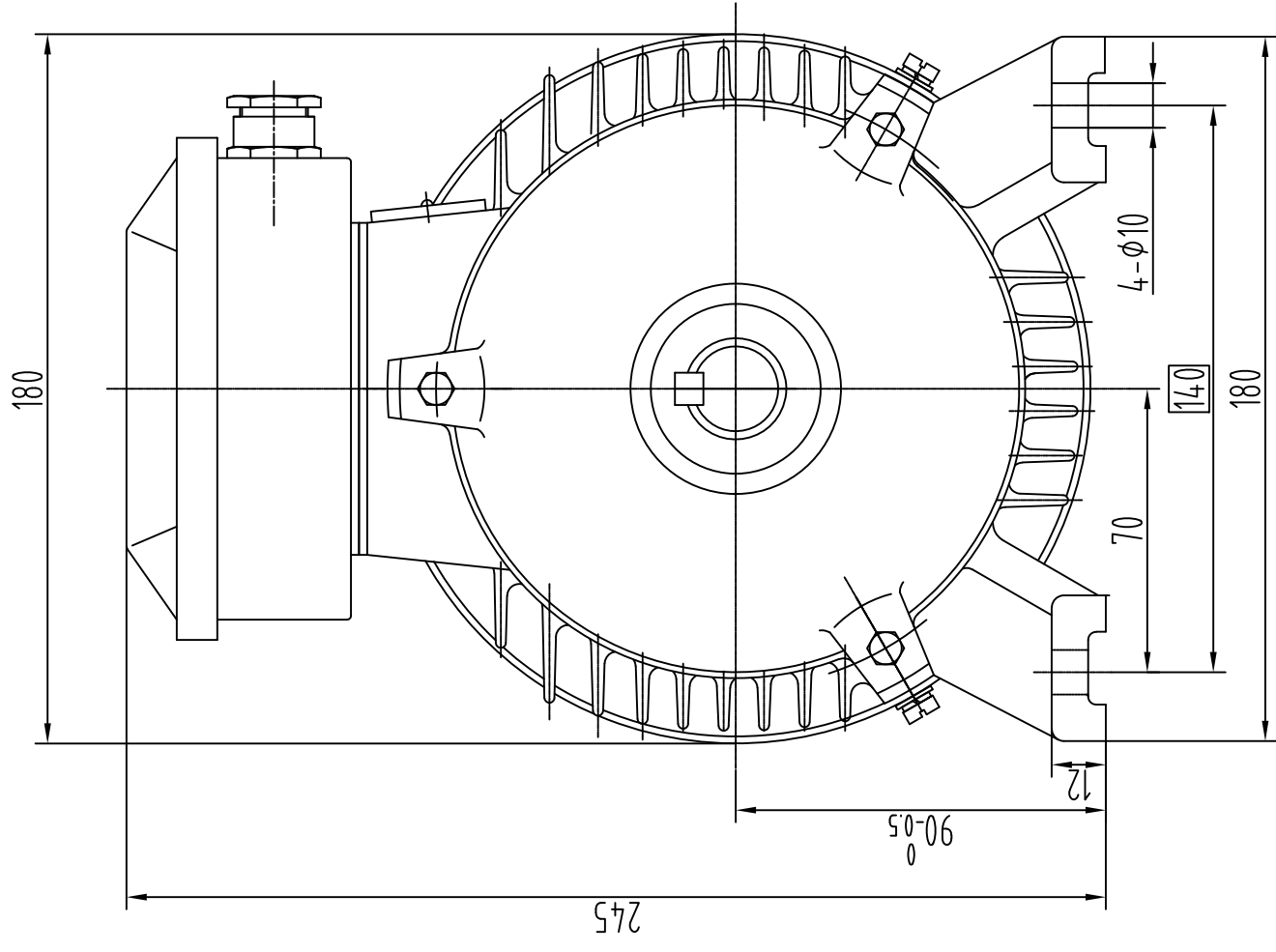
Model Number	OMT3-90S00-2 1.5KW		
Standard	IEC 60034-1	Output	1.50 KW
Hazardous Classification	None (Safe Area)	No of Poles	2 Pole
Efficiency Class	IE3	Frame Size	90S
Number of Phases	3 Phase- Induction	Mounting Type	B3; B35, B14, B5, V1
Material of Construction	Cast Iron	Enclosure Type / Cooling	TEFC-IC411
Insulation Class	Class F	Degree of Protection	IP55
Temperature Rise Class	80K (B class)	Duty Cycle	S1- Continuous Duty
Ambient Temperature	-15°C ~ 50°C	Service Factor	SF 1.15
Starting Method	DOL / WYE-DELTA	Operating Altitude	1000 masl

## TECHNICAL DETAILS

Winding Connection	Y (Star)						
Frequency	50Hz			60Hz			
Rated Speed	2880 Rpm			3455 Rpm			
Voltage	380	400	415	380	400	440	460
Full Load Current [ IN ]	3.22 A	3.06 A	2.95 A	3.22 A	3.06 A	2.78 A	2.66 A
Locked Rotor Current [ IL / IN ]	7.1	7.1	7.1	7.1	7.1	7.1	7.1
Full Load Torque [ TN ]	4.97 Nm	4.97 Nm	4.97 Nm	4.15 Nm	4.15 Nm	4.15 Nm	4.15 Nm
Locked Rotor Torque [ TL / TN ]	2.2	2.2	2.2	2.6	2.6	2.6	2.6
Breakdown Torque [ TB / TN ]	2.3	2.3	2.3	2.8	2.8	2.8	2.8
Efficiency	50% load	81.6%	81.6%	81.6%	81.6%	81.6%	81.6%
	75% load	84.0%	84.0%	84.0%	84.0%	84.0%	84.0%
	100% load	84.2%	84.2%	84.2%	84.2%	84.2%	84.2%
Power Factor (cos φ)	50% load	0.67	0.67	0.67	0.67	0.67	0.67
	75% load	0.78	0.78	0.78	0.78	0.78	0.78
	100% load	0.84	0.84	0.84	0.84	0.84	0.84

## OTHER DETAILS

Bearing Configuration (DE / NDE)	Ball Bearing / Ball Bearing		
Bearing Lubrication Type	Grease - Mobil Polyrex EM		
Bearing Series Type	DE:	6205-2Z/C3	NDE: 6205-2Z/C3
Vibration	1.6 mm/sec	Direction of Rotation	CW or CCW
Moment of inertia (kg.m <sup>2</sup> )	0.0024	Sound Pressure Level	78 dB(A)
Final Colour	RAL-5012 : BLUE	Paint Specification	2 Pack Epoxy
Terminal Box Position	TOP/SIDE	Weight	24 kg



Drawing Title: OMT3 Type-1

Outline Drawing Motor Frame: 90S

Sheet No.	Dim. Size	Scale
1 OF 1	mm A3	1:5



# IP55-Cast Iron B3 MOTORS

## OMEC NORTH AMERICA INC.

A.J.B.	15.Jan.2025	00
Drawn By	Date	Approved By
		Rev.



# OMEC NORTH AMERICA INC.

## Performance Curves

kW: 1.5 RPM: 2880

IE3 GENERAL PURPOSE MOTORS- OMT 400V 50Hz

