



OMEC NORTH AMERICA INC

CAST IRON - GENERAL PURPOSE MOTORS

PRODUCT FEATURES

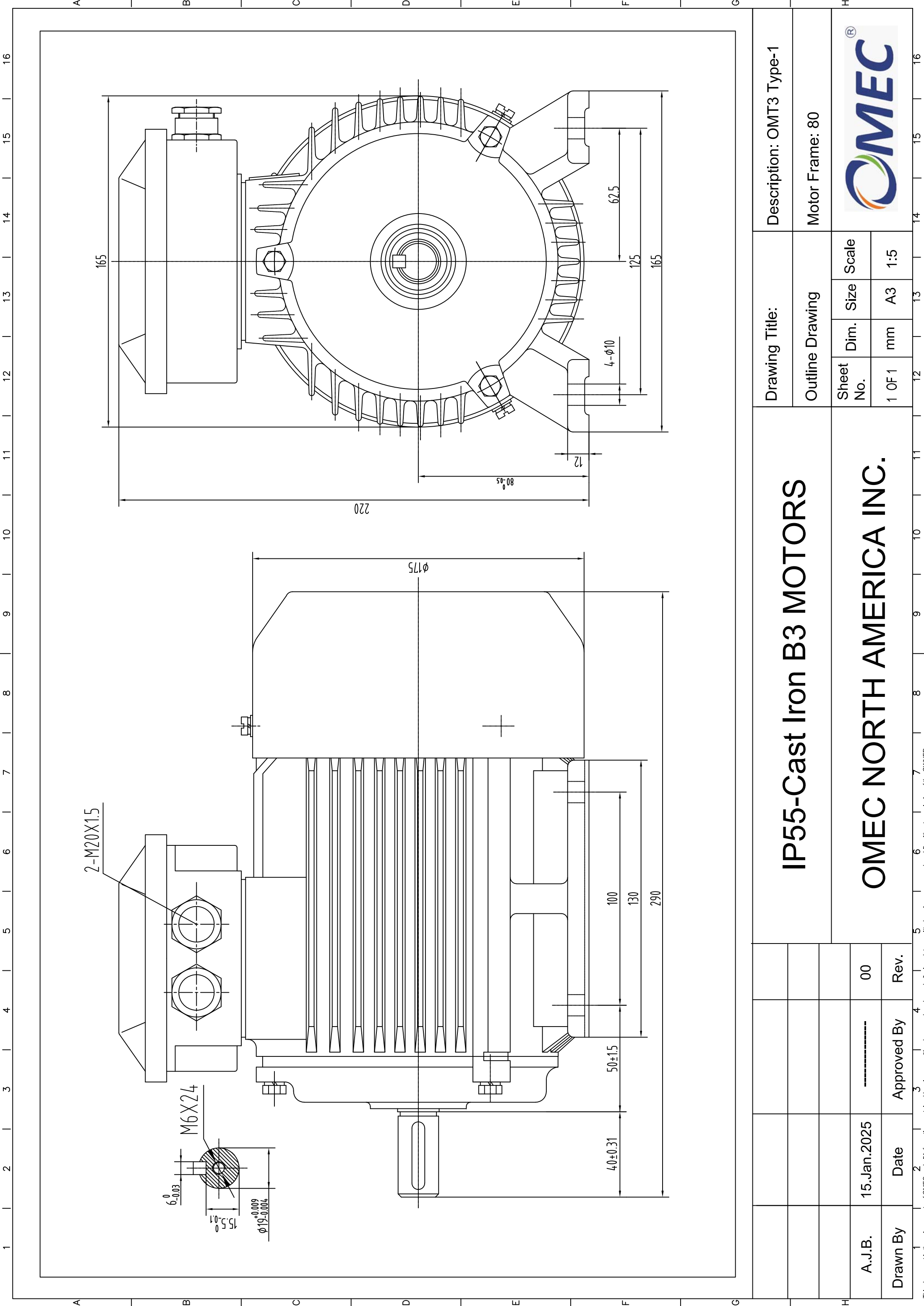
Model Number	OMT3-80M00-2 0.75KW		
Standard	IEC 60034-1	Output	0.75 KW
Hazardous Classification	None (Safe Area)	No of Poles	2 Pole
Efficiency Class	IE3	Frame Size	80M
Number of Phases	3 Phase- Induction	Mounting Type	B3; B35, B14, B5, V1
Material of Construction	Cast Iron	Enclosure Type / Cooling	TEFC-IC411
Insulation Class	Class F	Degree of Protection	IP55
Temperature Rise Class	80K (B class)	Duty Cycle	S1- Continuous Duty
Ambient Temperature	-15°C ~ 50°C	Service Factor	SF 1.15
Starting Method	DOL / WYE-DELTA	Operating Altitude	1000 masl

TECHNICAL DETAILS

Winding Connection	Y (Star)						
Frequency	50Hz			60Hz			
Rated Speed	2870 Rpm			3440 Rpm			
Voltage	380	400	415	380	400	440	460
Full Load Current [IN]	1.72 A	1.64 A	1.58 A	1.72 A	1.64 A	1.49 A	1.42 A
Locked Rotor Current [IL / IN]	6.5	6.5	6.5	6.5	6.5	6.5	6.5
Full Load Torque [TN]	2.50 Nm	2.50 Nm	2.50 Nm	2.08 Nm	2.08 Nm	2.08 Nm	2.08 Nm
Locked Rotor Torque [TL / TN]	2.3	2.3	2.3	2.8	2.8	2.8	2.8
Breakdown Torque [TB / TN]	2.3	2.3	2.3	2.8	2.8	2.8	2.8
Efficiency	50% load	78.8%	78.8%	78.8%	78.8%	78.8%	78.8%
	75% load	80.5%	80.5%	80.5%	80.5%	80.5%	80.5%
	100% load	80.7%	80.7%	80.7%	80.7%	80.7%	80.7%
Power Factor (cos φ)	50% load	0.65	0.65	0.65	0.65	0.65	0.65
	75% load	0.76	0.76	0.76	0.76	0.76	0.76
	100% load	0.82	0.82	0.82	0.82	0.82	0.82

OTHER DETAILS

Bearing Configuration (DE / NDE)	Ball Bearing / Ball Bearing		
Bearing Lubrication Type	Grease - Mobil Polyrex EM		
Bearing Series Type	DE:	6204-2Z/C3	NDE: 6204-2Z/C3
Vibration	1.6 mm/sec	Direction of Rotation	CW or CCW
Moment of inertia (kg.m ²)	0.0011	Sound Pressure Level	67 dB(A)
Final Colour	RAL-5012 : BLUE	Paint Specification	2 Pack Epoxy
Terminal Box Position	TOP/SIDE	Weight	18 kg



Drawing Title:		Description: OMT3 Type-1	
Outline Drawing		Motor Frame: 80	
Sheet No.	Dim. Size	Scale	
1 OF 1	mm A3	1:5	



IP55-Cast Iron B3 MOTORS

OMEC NORTH AMERICA INC.

A.J.B.	15.Jan.2025	00
Drawn By	Date	Approved By
		Rev.



OMEC NORTH AMERICA INC.

Performance Curves

kW: 0.75 RPM: 2870

IE3 GENERAL PURPOSE MOTORS- OMT 400V 50Hz

