



OMEC NORTH AMERICA INC

CAST IRON - GENERAL PURPOSE MOTORS

PRODUCT FEATURES

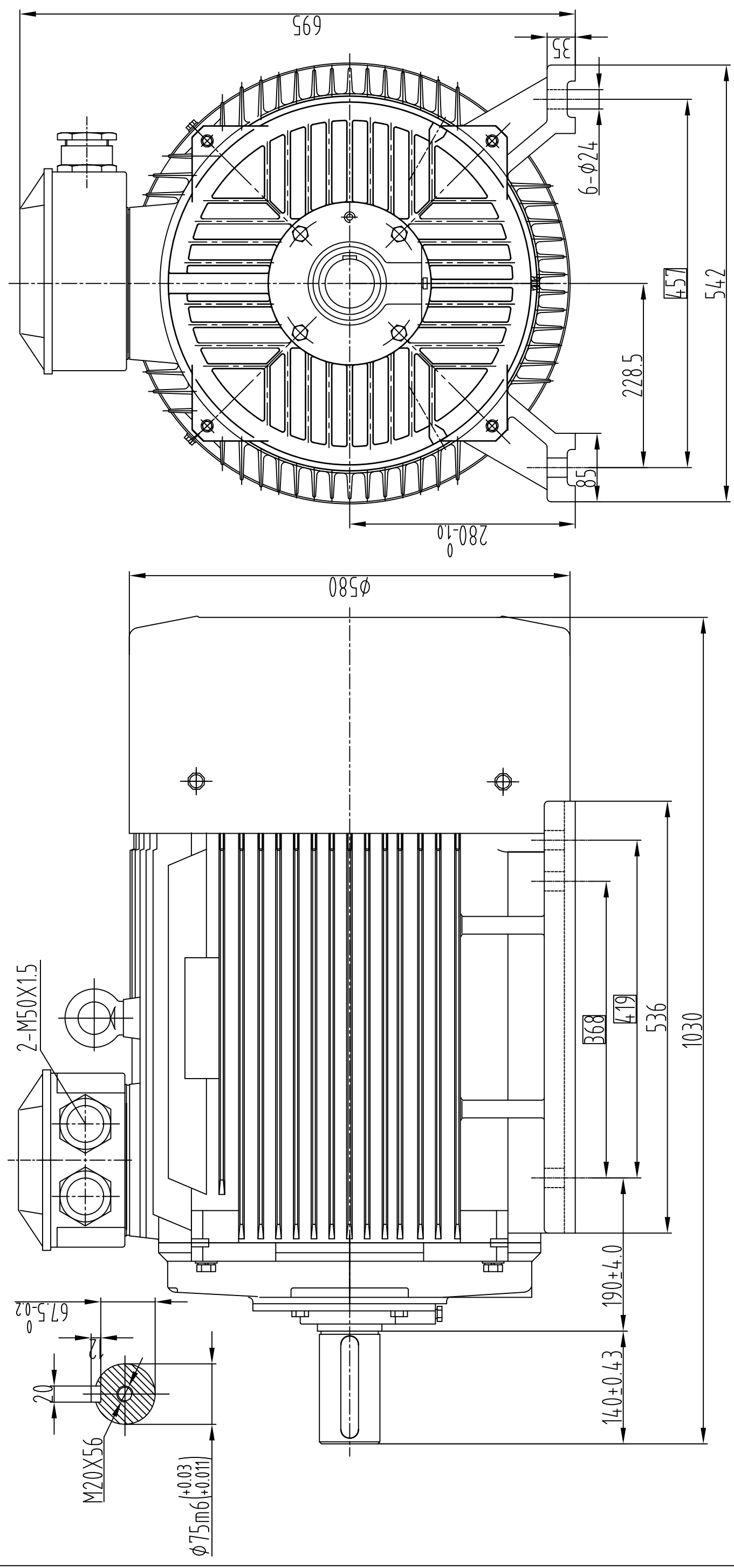
Model Number	OMT3-280SM0-4 75KW		
Standard	IEC 60034-1	Output	75.00 KW
Hazardous Classification	None (Safe Area)	No of Poles	4 Pole
Efficiency Class	IE3	Frame Size	280SM(A)
Number of Phases	3 Phase- Induction	Mounting Type	B3; B35, B5, V1
Material of Construction	Cast Iron	Enclosure Type / Cooling	TEFC-IC411
Insulation Class	Class F	Degree of Protection	IP55
Temperature Rise Class	80K (B class)	Duty Cycle	S1- Continuous Duty
Ambient Temperature	-15°C ~ 50°C	Service Factor	SF 1.15
Starting Method	DOL / WYE-DELTA	Operating Altitude	1000 masl

TECHNICAL DETAILS

Winding Connection	Δ (Delta)						
Frequency	50Hz			60Hz			
Rated Speed	1490 Rpm			1785 Rpm			
Voltage	380	400	415	380	400	440	460
Full Load Current [IN]	135.79 A	129.00 A	124.34 A	135.79 A	129.00 A	117.27 A	112.17 A
Locked Rotor Current [IL / IN]	6.9	6.9	6.9	6.9	6.9	6.9	6.9
Full Load Torque [TN]	480.70 Nm	480.70 Nm	480.70 Nm	401.26 Nm	401.26 Nm	401.26 Nm	401.26 Nm
Locked Rotor Torque [TL / TN]	2.0	2.0	2.0	2.4	2.4	2.4	2.4
Breakdown Torque [TB / TN]	2.3	2.3	2.3	2.8	2.8	2.8	2.8
Efficiency	50% load	94.0%	94.0%	94.0%	94.0%	94.0%	94.0%
	75% load	94.9%	94.9%	94.9%	94.9%	94.9%	94.9%
	100% load	95.0%	95.0%	95.0%	95.0%	95.0%	95.0%
Power Factor (cos φ)	50% load	0.77	0.77	0.77	0.77	0.77	0.77
	75% load	0.85	0.85	0.85	0.85	0.85	0.85
	100% load	0.88	0.88	0.88	0.88	0.88	0.88

OTHER DETAILS

Bearing Configuration (DE / NDE)	Ball Bearing / Ball Bearing		
Bearing Lubrication Type	Grease - ESSO UNIREX N2		
Bearing Series Type	DE:	6317/C3	NDE: 6314/C3
Vibration	TBA	Direction of Rotation	CW or CCW
Moment of inertia (kg.m ²)	TBA	Sound Pressure Level	TBA
Final Colour	RAL-5012 : BLUE	Paint Specification	2 Pack Epoxy
Terminal Box Position	TOP/SIDE	Weight	600 kg



IP55-Cast Iron B3 MOTORS

OMEC NORTH AMERICA INC.

Description: OMT3 Type-1

Motor Frame: 280SM-4



Drawing Title:

Outline Drawing

Sheet No.	Dim.	Size	Scale
1 OF 1	mm	A3	1:5

A.J.B. 15.Jan.2025

Drawn By Date

Approved By

00

Rev.



OMEC NORTH AMERICA INC.

Performance Curves

kW: 75 RPM: 1490

IE3 GENERAL PURPOSE MOTORS- OMT 400V 50Hz

