



# OMEC NORTH AMERICA INC

CAST IRON - GENERAL PURPOSE MOTORS

## PRODUCT FEATURES

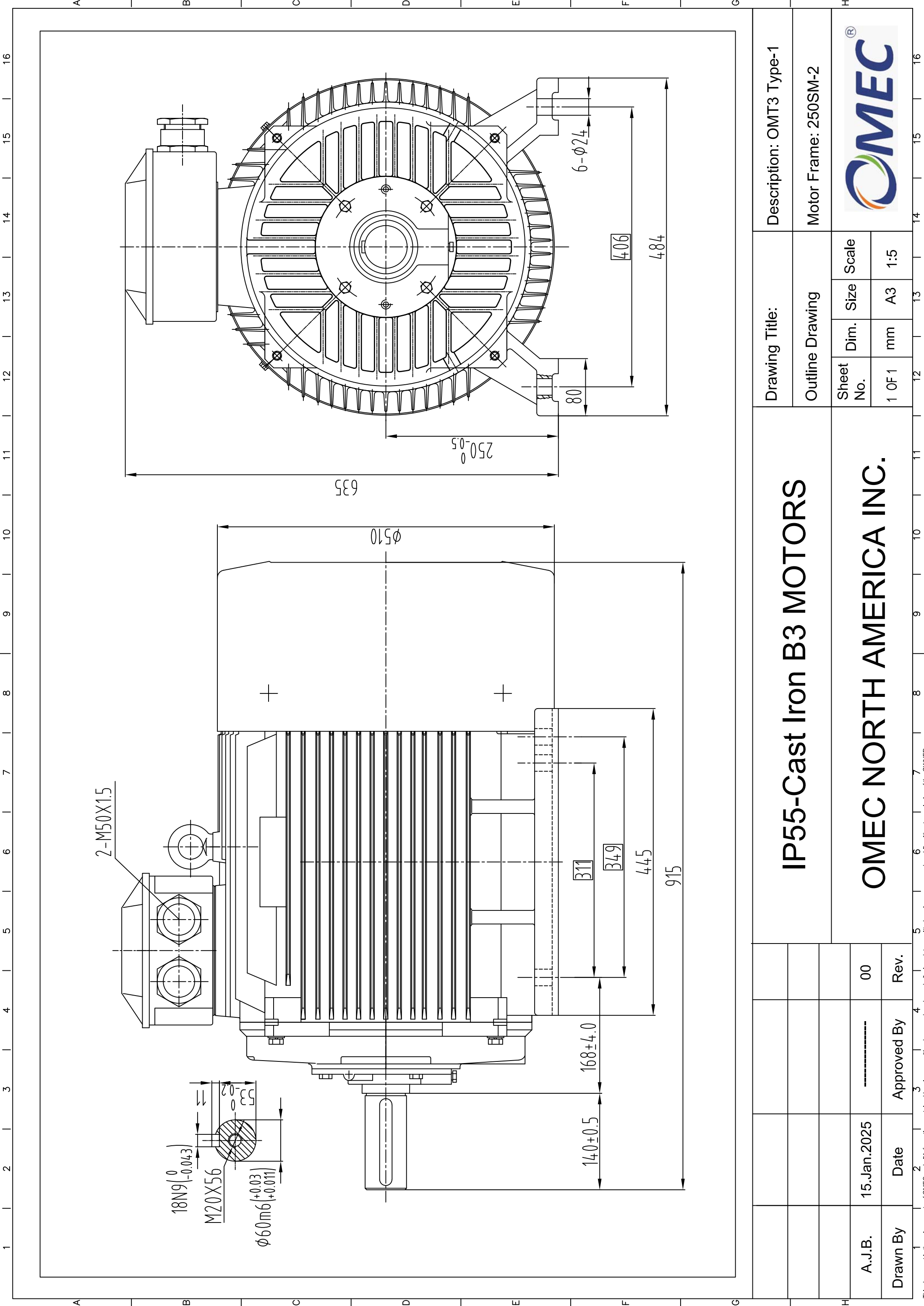
<b>Model Number</b>	OMT3-250M00-2 75KW		
<b>Standard</b>	IEC 60034-1	<b>Output</b>	75.00 KW
<b>Hazardous Classification</b>	None (Safe Area)	<b>No of Poles</b>	2 Pole
<b>Efficiency Class</b>	IE3	<b>Frame Size</b>	250M
<b>Number of Phases</b>	3 Phase- Induction	<b>Mounting Type</b>	B3; B35, B5, V1
<b>Material of Construction</b>	Cast Iron	<b>Enclosure Type / Cooling</b>	TEFC-IC411
<b>Insulation Class</b>	Class F	<b>Degree of Protection</b>	IP55
<b>Temperature Rise Class</b>	80K (B class)	<b>Duty Cycle</b>	S1- Continuous Duty
<b>Ambient Temperature</b>	-15°C ~ 50°C	<b>Service Factor</b>	SF 1.15
<b>Starting Method</b>	DOL / WYE-DELTA	<b>Operating Altitude</b>	1000 masl

## TECHNICAL DETAILS

<b>Winding Connection</b>	Δ (Delta)						
<b>Frequency</b>	50Hz			60Hz			
<b>Rated Speed</b>	2975 Rpm			3570 Rpm			
<b>Voltage</b>	<b>380</b>	<b>400</b>	<b>415</b>	<b>380</b>	<b>400</b>	<b>440</b>	<b>460</b>
<b>Full Load Current [ IN ]</b>	133.70 A	127.02 A	122.43 A	133.70 A	127.02 A	115.47 A	110.45 A
<b>Locked Rotor Current [ IL / IN ]</b>	7.7	7.7	7.7	7.7	7.7	7.7	7.7
<b>Full Load Torque [ TN ]</b>	240.76 Nm	240.76 Nm	240.76 Nm	200.63 Nm	200.63 Nm	200.63 Nm	200.63 Nm
<b>Locked Rotor Torque [ TL / TN ]</b>	2.0	2.0	2.0	2.4	2.4	2.4	2.4
<b>Breakdown Torque [ TB / TN ]</b>	2.3	2.3	2.3	2.8	2.8	2.8	2.8
<b>Efficiency</b>	<b>50% load</b>	93.7%	93.7%	93.7%	93.7%	93.7%	93.7%
	<b>75% load</b>	94.6%	94.6%	94.6%	94.6%	94.6%	94.6%
	<b>100% load</b>	94.7%	94.7%	94.7%	94.7%	94.7%	94.7%
<b>Power Factor (cos φ)</b>	<b>50% load</b>	0.82	0.82	0.82	0.82	0.82	0.82
	<b>75% load</b>	0.88	0.88	0.88	0.88	0.88	0.88
	<b>100% load</b>	0.90	0.90	0.90	0.90	0.90	0.90

## OTHER DETAILS

<b>Bearing Configuration (DE / NDE)</b>	Ball Bearing / Ball Bearing		
<b>Bearing Lubrication Type</b>	Grease - Mobil Polyrex EM		
<b>Bearing Series Type</b>	<b>DE:</b>	6315/C3	<b>NDE:</b> 6314/C3
<b>Vibration</b>	2.2 mm/sec	<b>Direction of Rotation</b>	CW or CCW
<b>Moment of inertia (kg.m<sup>2</sup>)</b>	1.0262	<b>Sound Pressure Level</b>	92 dB(A)
<b>Final Colour</b>	RAL-5012 : BLUE	<b>Paint Specification</b>	2 Pack Epoxy
<b>Terminal Box Position</b>	TOP/SIDE	<b>Weight</b>	418 kg



Description: OMT3 Type-1

Motor Frame: 250SM-2



Drawing Title:

Outline Drawing

Sheet No.	Dim. mm	Size	Scale
1 OF 1	mm	A3	1:5

# IP55-Cast Iron B3 MOTORS

## OMEC NORTH AMERICA INC.

A.J.B. 15.Jan.2025

Drawn By Date Approved By Rev. 00



# OMEC NORTH AMERICA INC.

## Performance Curves

kW: 75 RPM: 2975

IE3 GENERAL PURPOSE MOTORS- OMT 400V 50Hz

