



# OMEC NORTH AMERICA INC

CAST IRON - GENERAL PURPOSE MOTORS

## PRODUCT FEATURES

Model Number	OMT3-200L00-2 37KW		
Standard	IEC 60034-1	Output	37.00 KW
Hazardous Classification	None (Safe Area)	No of Poles	2 Pole
Efficiency Class	IE3	Frame Size	200L
Number of Phases	3 Phase- Induction	Mounting Type	B3; B35, B5, V1
Material of Construction	Cast Iron	Enclosure Type / Cooling	TEFC-IC411
Insulation Class	Class F	Degree of Protection	IP55
Temperature Rise Class	80K (B class)	Duty Cycle	S1- Continuous Duty
Ambient Temperature	-15°C ~ 50°C	Service Factor	SF 1.15
Starting Method	DOL / WYE-DELTA	Operating Altitude	1000 masl

## TECHNICAL DETAILS

Winding Connection	Δ (Delta)						
Frequency	50Hz			60Hz			
Rated Speed	2965 Rpm			3555 Rpm			
Voltage	380	400	415	380	400	440	460
Full Load Current [ IN ]	67.41 A	64.04 A	61.73 A	67.41 A	64.04 A	58.22 A	55.69 A
Locked Rotor Current [ IL / IN ]	7.6	7.6	7.6	7.6	7.6	7.6	7.6
Full Load Torque [ TN ]	119.17 Nm	119.17 Nm	119.17 Nm	99.40 Nm	99.40 Nm	99.40 Nm	99.40 Nm
Locked Rotor Torque [ TL / TN ]	2.0	2.0	2.0	2.4	2.4	2.4	2.4
Breakdown Torque [ TB / TN ]	2.3	2.3	2.3	2.8	2.8	2.8	2.8
Efficiency	50% load	92.5%	92.5%	92.5%	92.5%	92.5%	92.5%
	75% load	93.6%	93.6%	93.6%	93.6%	93.6%	93.6%
	100% load	93.7%	93.7%	93.7%	93.7%	93.7%	93.7%
Power Factor (cos φ)	50% load	0.80	0.80	0.80	0.80	0.80	0.80
	75% load	0.87	0.87	0.87	0.87	0.87	0.87
	100% load	0.89	0.89	0.89	0.89	0.89	0.89

## OTHER DETAILS

Bearing Configuration (DE / NDE)	Ball Bearing / Ball Bearing		
Bearing Lubrication Type	Grease - Mobil Polyrex EM		
Bearing Series Type	DE:	6312/C3	NDE: 6312/C3
Vibration	2.2 mm/sec	Direction of Rotation	CW or CCW
Moment of inertia (kg.m <sup>2</sup> )	0.2168	Sound Pressure Level	90 dB(A)
Final Colour	RAL-5012 : BLUE	Paint Specification	2 Pack Epoxy
Terminal Box Position	TOP/SIDE	Weight	280 kg

16N9<sup>0</sup><sub>(-0.043)</sub>

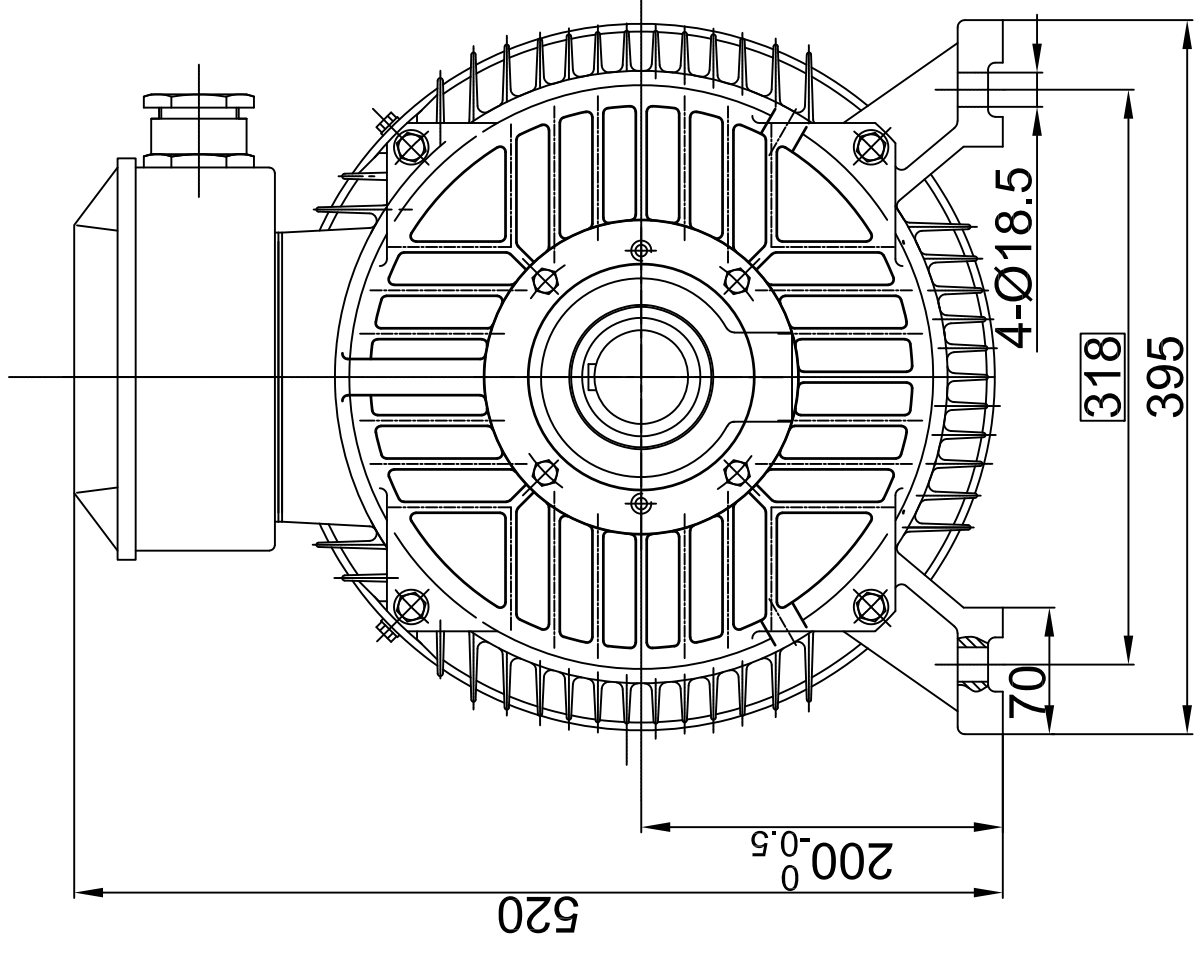
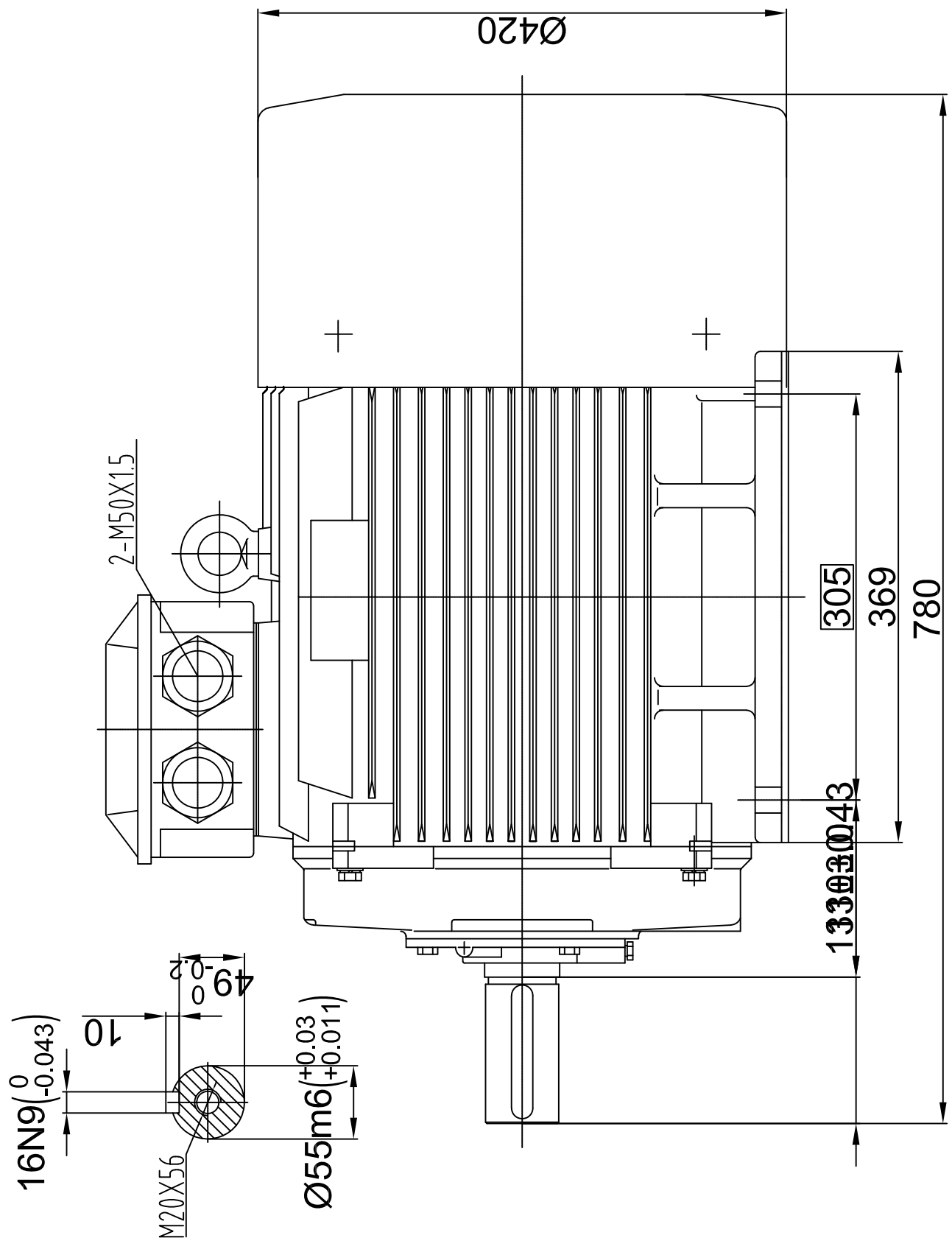
10

M20X56

49<sup>0</sup><sub>(-0.2)</sub>

Ø55m6<sup>(+0.03)</sup><sub>(+0.011)</sub>

2-M50X1.5



# IP55-Cast Iron B3 MOTORS

## OMEC NORTH AMERICA INC.

Drawing Title: Description: OMT3 Type-1

Outline Drawing Motor Frame: 200L

Sheet No.	Dim.	Size	Scale
1 OF 1	mm	A3	1:5



Drawn By	Date	Approved By	Rev.
A.J.B.	15.Jan.2025	-----	00



# OMEC NORTH AMERICA INC.

## Performance Curves

kW: 37 RPM: 2965

IE3 GENERAL PURPOSE MOTORS- OMT 400V 50Hz

