



OMEC NORTH AMERICA INC

CAST IRON - GENERAL PURPOSE MOTORS

PRODUCT FEATURES

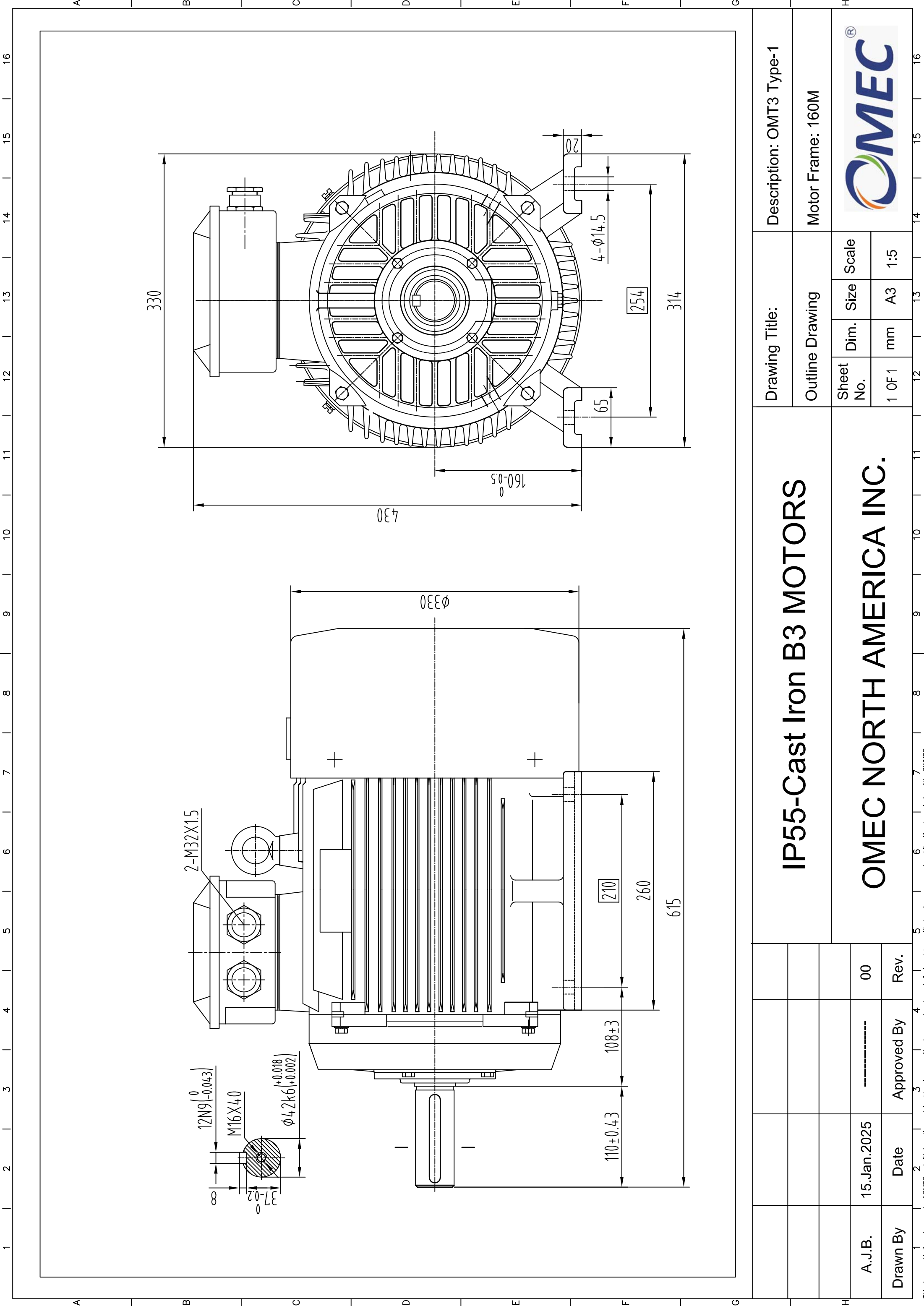
| | | | |
|--------------------------|---------------------|--------------------------|----------------------|
| Model Number | OMT3-160M00-4 9.2KW | | |
| Standard | IEC 60034-1 | Output | 9.20 KW |
| Hazardous Classification | None (Safe Area) | No of Poles | 4 Pole |
| Efficiency Class | IE3 | Frame Size | 160M |
| Number of Phases | 3 Phase- Induction | Mounting Type | B3; B35, B14, B5, V1 |
| Material of Construction | Cast Iron | Enclosure Type / Cooling | TEFC-IC411 |
| Insulation Class | Class F | Degree of Protection | IP55 |
| Temperature Rise Class | 80K (B class) | Duty Cycle | S1- Continuous Duty |
| Ambient Temperature | -15°C ~ 50°C | Service Factor | SF 1.15 |
| Starting Method | DOL / WYE-DELTA | Operating Altitude | 1000 masl |

TECHNICAL DETAILS

| | | | | | | | |
|----------------------------------|-----------|----------|----------|----------|----------|----------|----------|
| Winding Connection | Δ (Delta) | | | | | | |
| Frequency | 50Hz | | | 60Hz | | | |
| Rated Speed | 1470 Rpm | | | 1760 Rpm | | | |
| Voltage | 380 | 400 | 415 | 380 | 400 | 440 | 460 |
| Full Load Current [IN] | 17.99 A | 17.09 A | 16.47 A | 17.99 A | 17.09 A | 15.54 A | 14.86 A |
| Locked Rotor Current [IL / IN] | 9.2 | 9.2 | 9.2 | 9.2 | 9.2 | 9.2 | 9.2 |
| Full Load Torque [TN] | 59.77 Nm | 59.77 Nm | 59.77 Nm | 49.92 Nm | 49.92 Nm | 49.92 Nm | 49.92 Nm |
| Locked Rotor Torque [TL / TN] | 2.6 | 2.6 | 2.6 | 3.1 | 3.1 | 3.1 | 3.1 |
| Breakdown Torque [TB / TN] | 2.8 | 2.8 | 2.8 | 3.3 | 3.3 | 3.3 | 3.3 |
| Efficiency | 50% load | 90.3% | 90.3% | 90.3% | 90.3% | 90.3% | 90.3% |
| | 75% load | 91.3% | 91.3% | 91.3% | 91.3% | 91.3% | 91.3% |
| | 100% load | 91.4% | 91.4% | 91.4% | 91.4% | 91.4% | 91.4% |
| Power Factor (cos φ) | 50% load | 0.61 | 0.61 | 0.61 | 0.61 | 0.61 | 0.61 |
| | 75% load | 0.79 | 0.79 | 0.79 | 0.79 | 0.79 | 0.79 |
| | 100% load | 0.85 | 0.85 | 0.85 | 0.85 | 0.85 | 0.85 |

OTHER DETAILS

| | | | |
|--|-----------------------------|-----------------------|--------------|
| Bearing Configuration (DE / NDE) | Ball Bearing / Ball Bearing | | |
| Bearing Lubrication Type | Grease - ESSO UNIREX N2 | | |
| Bearing Series Type | DE: | 6309/C3 | NDE: 6309/C3 |
| Vibration | 1.6 mm/sec | Direction of Rotation | CW or CCW |
| Moment of inertia (kg.m ²) | 0.1062 | Sound Pressure Level | 77 dB(A) |
| Final Colour | RAL-5012 : BLUE | Paint Specification | 2 Pack Epoxy |
| Terminal Box Position | TOP/SIDE | Weight | 130 kg |



| | | | |
|-----------------|-----------|--------------------------|--|
| Drawing Title: | | Description: OMT3 Type-1 | |
| Outline Drawing | | Motor Frame: 160M | |
| Sheet No. | Dim. Size | Scale | |
| 1 OF 1 | mm A3 | 1:5 | |

IP55-Cast Iron B3 MOTORS

OMEC NORTH AMERICA INC.



| | | | |
|----------|-------------|-------------|------|
| Drawn By | Date | Approved By | Rev. |
| A.J.B. | 15.Jan.2025 | ----- | 00 |

This document is the sole property of OMEC and all information contained herein may neither be reproduced, used, disclosed, transmitted nor in any way made public without permission of the OWNER.



OMEC NORTH AMERICA INC.

Performance Curves

kW: 9.2 RPM: 1470

IE3 GENERAL PURPOSE MOTORS- OMT 400V 50Hz

